



The Parish of  
**Swindon  
New Town**

## MESSENGER

### Sunday 25th January 2026 Third Sunday in Ordinary Time

#### THIS WEEK IN THE PARISH

<b>Monday</b> <b>SS. Timothy &amp; Titus</b>	S. Mark - 8.45am Morning Prayer S. Mark - 9am Toddler Group S. Mark - 12.30pm Mass S. Mark - 1-4pm Welcome Space S. Mark - 5pm Evening Prayer Theology in the Pub 7.30pm The Glue Pot (5 Emlyn Square)
<b>Tuesday</b> <b>Feria</b>	S. Luke - 8am Mass S. Mark - 8.45am Morning Prayer S. Saviour - 9.30am Mass S. Luke - 1-3pm Welcome Space S. Mark - 5pm Evening Prayer
<b>Wednesday</b> <b>S. Thomas Aquinas</b>	S. Mark - 8.45am Morning Prayer S. Mark - 6.30pm Evening Prayer S. Mark - 7pm Mass
<b>Thursday</b> <b>Feria</b>	S. Mark - 8.45am Morning Prayer S. Luke - 9.30am Mass S. Mark - 5pm Evening Prayer
<b>Friday</b> <b>Feria</b>	S. Mark - 8.45am Morning Prayer S. Mark - 5pm Evening Prayer S. Luke - 6pm Sung Mass with readings in Konkani
<b>Saturday</b> <b>S. John Bosco</b>	S. Aldhelm - 10am Mass S. Luke - 6pm Vigil Mass with readings in Konkani
<b>Sunday 1st Feb</b> <b>4th Sunday in</b> <b>Ordinary Time</b>	S. Mark - 7.30am Said Mass S. Mark - 8am Morning Prayer S. Saviour - 9am Sung Mass S. Mark - 10.30am Sung Mass S. Luke - 11am Sung Mass S. Mark - 5pm Evening Prayer

**CHRISTIAN UNITY EVENSONG** - Join us for Choral Evensong at 6pm this evening at S. Mark's. We'll be inviting members of other local churches to Choral Evensong to mark the Octave of Prayer for Christian Unity, please do come and help welcome our ecumenical guests. Evensong will be followed by refreshments. The preacher will be the Revd Jonathan Edwards, the minister of Central Church in the town centre and a former General Secretary of the Baptist Union.

**CANDLEMAS** - There will be a Sung Mass for the Feast of the Presentation of the Lord at S. Mark's next Monday, 2 February at 7.30pm. Carol Simmons, our Parish Reader, will be the preacher. The Mass will be followed by refreshments.

**BEN MULCOCK** - Please pray for our former parishioner Ben Mulcock who will be clothed as a novice at Hillfield Priory on 3 February; he has been given the name Leo to take as his clothing.

**THEOLOGY IN THE PUB** - This takes place at The Glue Pot (5 Emlyn Sq) at 7.30pm on Monday, 26th January. The topic will be Church and Community - What can our church offer to those who live and work nearby?

**YOUTH CLUB** - this runs at S. Saviour's on Fridays from 7.30 - 9.00pm and is for all young people aged 11-17. There will be games, activities and food. It is FREE (except for the tuckshop!) If you are interested, please speak to Tom or contact him at [tom@psnt.uk](mailto:tom@psnt.uk)

**TODDLER GROUP** - This runs at S. Mark's on Mondays from 9 - 10.30am. If you are interested or wish to know more, please contact Tom [tom@psnt.uk](mailto:tom@psnt.uk)

**WELCOME SPACES** - The Welcome Space at S. Mark's is from 1pm to 4pm on Mondays and the Welcome Space, with Free Shop, at S. Luke's is from 1pm to 3pm on Tuesdays. Everyone is welcome - please do come and support these. If you feel able to help, please contact Tom [tom@psnt.uk](mailto:tom@psnt.uk)

**YOUNG ADULTS GROUP** - The Guild of S. Thérèse of Lisieux, is a group for young adults aged between 18-35. There is usually prayer followed by a social event. If you would like to know more about this group then please speak to Fr Adam. [fr.adam@psnt.uk](mailto:fr.adam@psnt.uk)

**BEER FESTIVAL** – Please make sure that these dates are in your calendar. 2026 Beer Festival – Friday 24 July (from 4pm to 10pm) and Saturday 25 July (from noon to 10pm). If you could help in any way, please speak to Carol Simmons

**ADVANCE NOTICE** - The Kentwood show choir will be performing at S. Mark's on Friday 1st May at 7.30pm. Please put this date in your diary. Tickets will be on sale soon.

**WALSINGHAM PILGRIMAGE 2026** - Our annual pilgrimage to Walsingham is booked for Monday 29th June – Friday 3rd July. The cost will be approximately £450. This is dependant on numbers. We have provisionally booked 20 places. Please email the office [office@psnt.uk](mailto:office@psnt.uk) if you are interested and I will get more details out to you.

## **TODAY WE PRAY FOR**

### **RECENTLY DEPARTED**

John Fuller, Ron Burchell, Paul Tracey, Peter Garlick (priest),  
Rodney Padmore, Andy Beaton

### **YEAR'S MIND**

[25] Sydney Polletti, Gwendoline Emily Clack [26] Patricia Mary Giles,  
Margaret Ann Burge [27] Tony Buckland, Jack Thomas  
[28] Adrian Trembling [29] Charles Smith (priest), Anthony Jones  
[30] Muriel Lewis [31] David Penney

**FOR YOUR WEEKLY INTERCESSIONS** - Richard & Maddie Charman,  
John Wilson, Sue Davis, Margaret Stevenson, Chris Ockwell, Roy Norton,  
Wagner Lisboa, Joe Hicks, Katie Joseph, Sarah Druett, Renelle Nunes,  
Moncy Miranda, Moina Clement, Lourenco Gonsalves, Kayleigh Winbow,  
Grace King, Barbara Sheppard, Evelyn Bartlett, Lynn Thrussell, Kylie  
Lawson, Aida Gomendes, Sally Hobbs

**HOME COMMUNICANTS** - Muriel Avenell, Betty Mitchell, Owen  
Shellard, Maurice Lidgeley, Beryl & Les Howell, Cynthia Strudwick,

**PASTORAL CARE** - Please do feel free to call the clergy if there is  
anything they can do to support you or others you know with any pastoral  
or spiritual needs.

email [fr.toby@psnt.uk](mailto:fr.toby@psnt.uk) mobile 07773 377503 home 01793 952910  
[fr.tim@psnt.uk](mailto:fr.tim@psnt.uk) mobile 07447 449961  
[fr.adam@psnt.uk](mailto:fr.adam@psnt.uk) home 01793 925345

**For this week's readings see** <https://universalis.com/20260125/mass.htm>

**NEXT WEEK'S READINGS** Is 49:3,5-9; Ps 39; 1 Cor 1:1-3; John 1:29-34

**PARISH OFFICE** - Contact Linda McEntee Tel: 01793 538220  
Mon 9-11am, Thurs 9am-1pm, Friday 9-12noon [office@psnt.uk](mailto:office@psnt.uk)  
Safeguarding - Lynn Trigg 07812198128 [lynn@psnt.uk](mailto:lynn@psnt.uk)

**PLANNED GIVING**- For those who make their offering by weekly  
envelopes, boxed sets of envelopes for **2026** are available. If you would like  
to have a boxed set of envelopes, please contact John Bishop.

Alternatively if you would prefer to make your offering by bank transfer,  
our banking details are: Parish of Swindon New Town PCC,  
Sort code 40-52-40, Account number 00024962.

(Please use S. Mark, S. Saviour or S. Luke as your reference or say what the  
payment is for, if not for planned giving) John Bishop [treasurer@psnt.uk](mailto:treasurer@psnt.uk)

# WELCOME SPACE

A social space for the whole community

**Every Tuesday 1pm-3pm**  
in the Parish Hall of S. Luke's Church,  
Broad Street SN1 2DS

**FREE SHOP**

**Free refreshments**

**Board games, arts & crafts**



# WELCOME SPACE

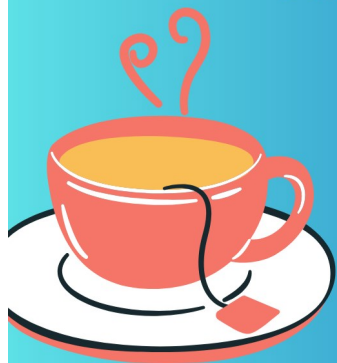
A social space for the whole community

**Every Monday 1pm-4pm**  
in the Parish Hall of S. Mark's Church,  
Church Place, SN1 5EH

**Free refreshments**

**Board games, arts & crafts**

**Time for a chat**



ASHFORD ROAD

# YOUTH CLUB



FRIDAYS FROM 7.30 - 9PM  
S. SAVIOUR'S CHURCH HALL,  
ASHFORD ROAD SN1 3NS

A new club for young people aged 11-17.  
Games, activities, food and a place to  
hang out at the end of the school week.

Contact Tom at [tom@psnt.uk](mailto:tom@psnt.uk)  
for more information.

# Toddler Playgroup



Every Monday 9.00am – 10.30am

At S. Mark's Church, SN1 5EH  
(opposite the GWR Park)

Connect with other parents / carers over  
coffee and bring your little one for  
nursery rhymes, playtime, healthy snacks,  
books and more. Suggested donation of £2



Contact: [tom@psnt.uk](mailto:tom@psnt.uk)  
07376317543



**S. Mark's**

Swindon New Town Parish [www.swindonnewtown.co.uk](http://www.swindonnewtown.co.uk)